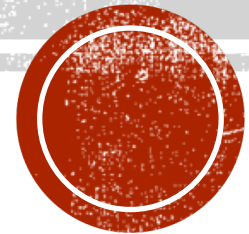


# **AIIS: A LOOK AHEAD**

**Samantha Lammers: IS Coordinator**



# WHAT WE KNOW

- Aquatic Invasive Species (AIS) can spread rapidly
- New infestations are hard to eradicate
- Prevention steps are still the best way to control AIS spread
- INSPECT, REMOVE, DRAIN





# WHAT WE HAVE IN MANITOWOC LAKES

Eurasian Water Milfoil

Curly Leaf Pondweed

Banded Mystery Snails

Chinese Mystery Snails

Rusty Crayfish

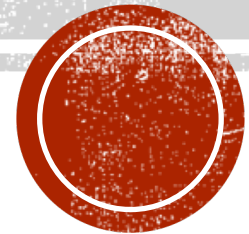


**BUT WHAT IS COMING?**

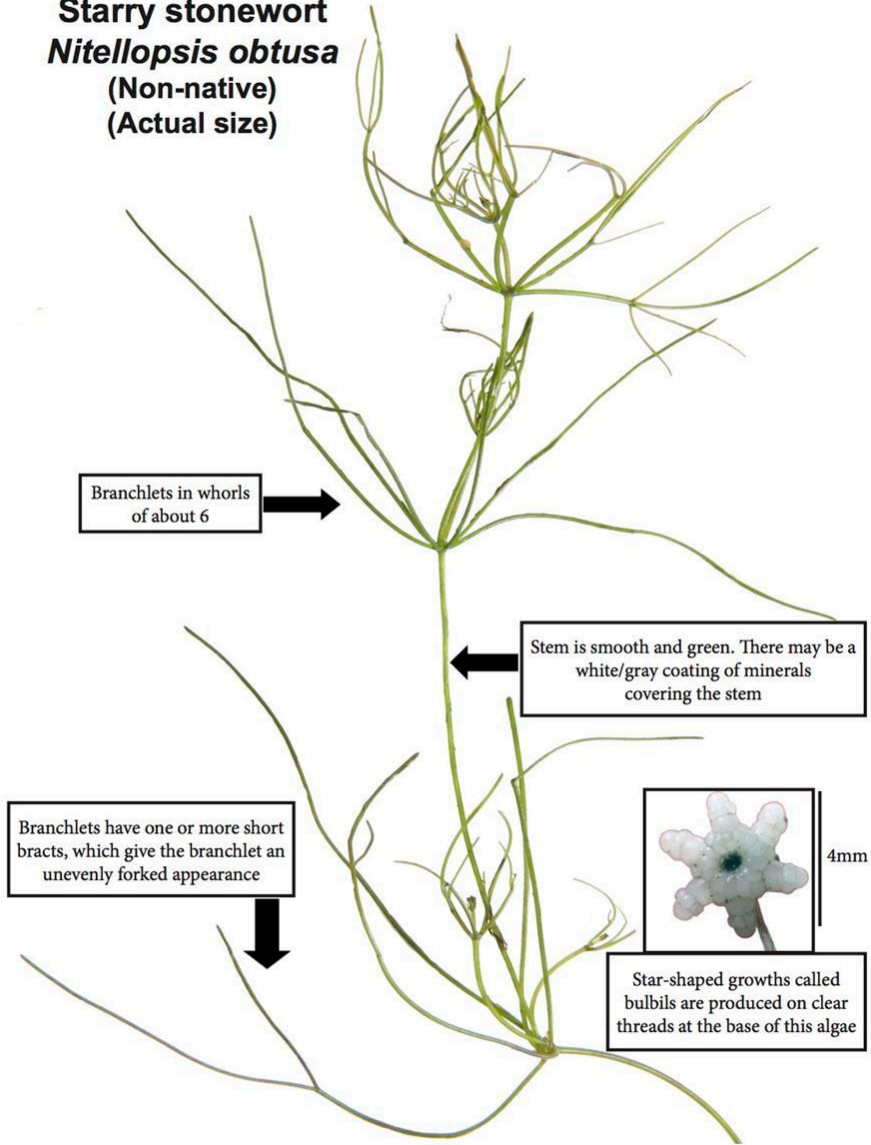


# STARRY STONEWORT

*Nitellopsis obtusa*



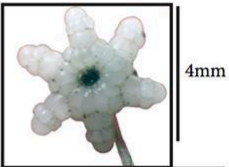
**Starry stonewort**  
*Nitellopsis obtusa*  
(Non-native)  
(Actual size)



Branchlets in whorls of about 6

Stem is smooth and green. There may be a white/gray coating of minerals covering the stem

Branchlets have one or more short bracts, which give the branchlet an unevenly forked appearance



Star-shaped growths called bulbils are produced on clear threads at the base of this algae

# STARRY STONEWORT ID

Actually a Chara, Algae

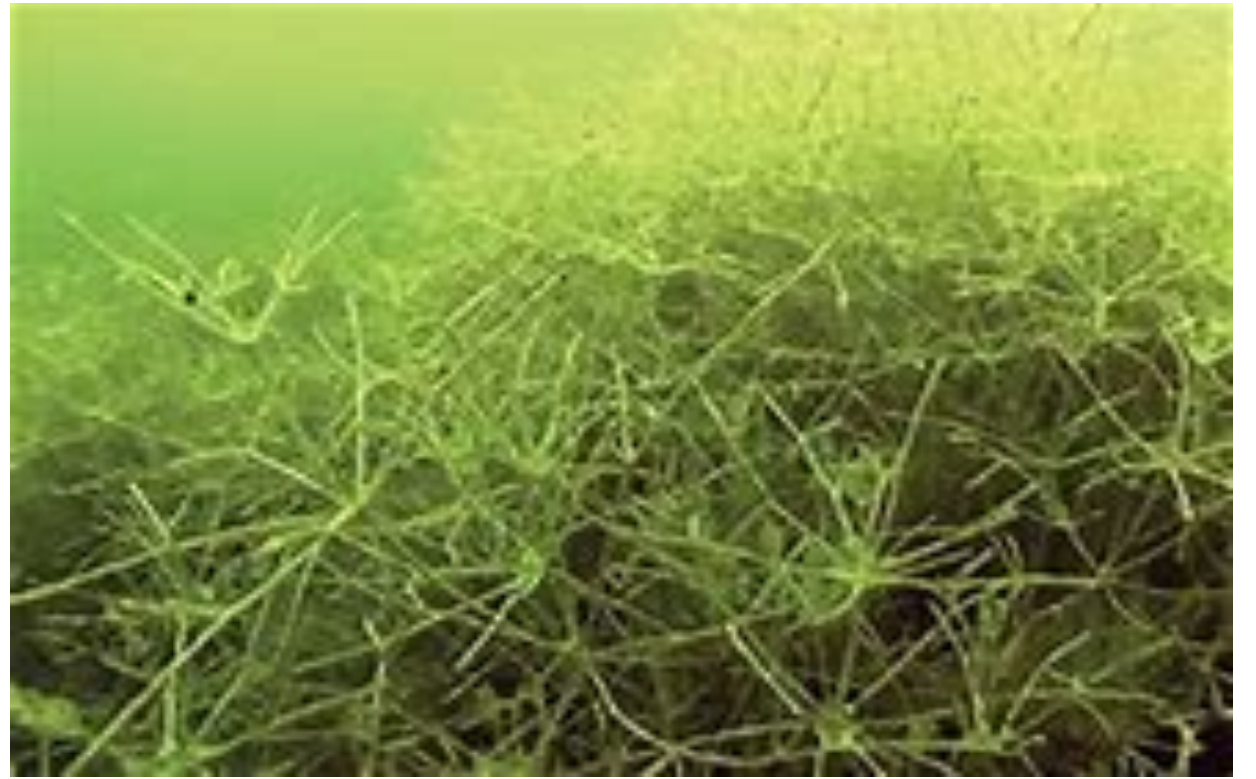
Looks like native plants

Pull plants to look at roots

Bulbils

Roots like fishing line





Starry stonewort

Photo by Paul Skawinski



# STARRY STONEWORT HISTORY IN WI

- First found: Fall 2014 in Little Muskego (Waukesha County)
  - By end of 2015 found 5 new established populations
  - 2016 added 8 new populations including 6 in Door County
  - 2017 added 1 new population
  - 2018 added 2 new populations
- 
- In total, currently 17 locations of SS have been identified...





Little Muskego Lake	Waukesha County	2014	
Big Muskego Lake	Waukesha County	2015	
Long Lake	Racine County	2015	
Silver Lake	Washington County	2015	
Pike Lake	Washington County	2015	
Bass Bay Lake – Connected to Big Muskego	Waukesha County	2015	Only Observed Population, observed by consultant and no DNR staff.
Green Lake	Washington County	2016	
Sturgeon Bay	Door County	2016	
Little Sturgeon Bay	Door County	2016	
Channel around High Cliff Park (Sturgeon Bay, WI)	Door County	2016	
Fish Creek (Green Bay)	Door County	2016	
Sister Bay/Green Bay Access	Door County	2016	
Ellison Bay/Lake Michigan	Door County	2016	
Lake Michigan - Rowleys Bay Access	Door County	2016	
Wind Lake	Racine County	2017	
Geneva Lake	Walworth County	2018	
Little Cedar Lake	Washington County	2018	





**Starry Stonewort**  
*Nitellopsis obtusa*

**INVASIVE SPECIES**



**Chara contraria**  
NATIVE SPECIES

Commonly mistaken for Starry Stonewort



**Chara globularis**  
NATIVE SPECIES

## **SOMETHING TO KEEP IN MIND...**

All spots of SS found in WI were  
mature populations

Have been there for YEARS!

Why?

Hard to ID

Looks like Native

Invasive

not as big of nuisance?

control lake 2018



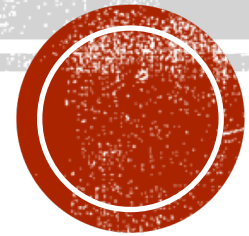
# WHAT CAN WE DO?

- Get to know ID!
- Look for Starry Stonewort in your lake/property
- Use prevention steps!
  - Inspect
  - Remove
  - Drain
- Removal/5 day dry time is ENOUGH for control of Starry Stonewort/Chara
- No additional decontamination is needed.



# OTHER SPECIES

What else could be coming our way?



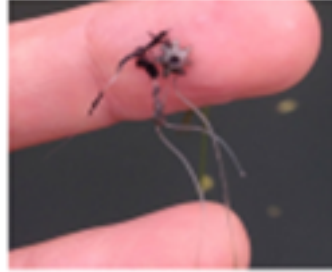
# What could be coming our way

Giant Hogweed



Asiatic Clam (Corbicula)

Starry Stonewort



Hairy Willow Herb



Hydrilla/Egeria densa (Illinois)



Water Hyacinth



Water Lettuce



Round goby



New Zealand Mud Snail



# QUESTIONS?

Thank you for your time!

