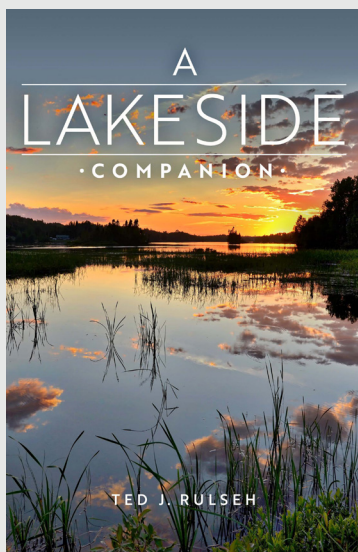


To interview the author or for more information, contact:

(608) 263-0734 Email: [publicity@uwpress.wisc.edu](mailto:publicity@uwpress.wisc.edu)

Please send copies of reviews, noting name, location, and date of issue, to the Publicity Department.



A  
LAKESIDE  
COMPANION

Ted J. Rulseh

Publication Date: September 11, 2018

224 pp. 6 x 9

Paper \$22.95 ISBN 978-0-299-32000-3

Find downloadable, high-resolution image  
links at the bottom of this web page:

<https://uwpress.wisc.edu/books/5756.htm>

**For anyone who loves a lake, this guide will help  
you know it more intimately**

“Delivers the magic of lake living while conveying water science topics in a clear and engaging way. Whether you are on the lakeshore or far away, it will bring you back to the waters you love. A great read.”

—Michael Engleson, executive director, Wisconsin Lakes

“Interesting and informative. Rulseh presents the science of lakes in an enjoyable way, with real world examples. He explains how little things that shore residents do on their property can have a large impact on the lake’s ecology.”

—Paul Garrison, retired limnologist, Wisconsin  
Department of Natural Resources

Whether you fish, paddle, swim, snowshoe, ski, or just gaze upon your favorite lake, *A Lakeside Companion* will deepen your appreciation for the forces that shape lakes and the teeming life in and around them.

**ABOUT THE AUTHOR**

CONTINUED ON BACK

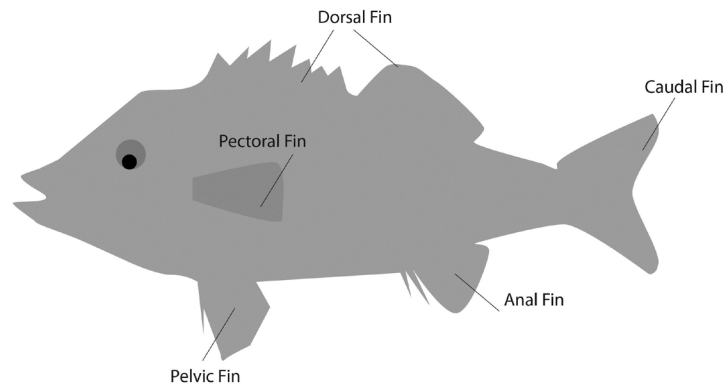


Ted J. Rulseh writes the newspaper column “The Lake Where You Live” and is active in lake-advocacy organizations, including the Wisconsin Citizen Lake Monitoring Network. The editor and publisher of several books on the Great Lakes region, he is the author of *On the Pond: Lake Michigan Reflections*. He lives in the lake-rich region of northeastern Wisconsin.

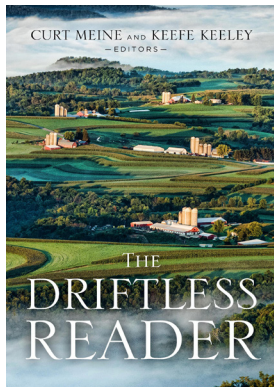
Why do fish jump? Why don't lakes freeze all the way down to the bottom? Which lake plants are invasive? What are those water bugs? Is that lake healthy? Whether you fish, paddle, swim, snowshoe, ski, or just gaze upon your favorite lake, *A Lakeside Companion* will deepen your appreciation for the forces that shape lakes and the teeming life in and around them.

You'll discover the interconnected worlds of a lake: the water; the sand, gravel, rocks, and muck of the bottom; the surface of the lake; the air above; and the shoreline, a belt of land incredibly rich in flora and fauna. Explained, too, are the physical, biological, and chemical processes that determine how many and what kinds of fish live in the lake, which plants grow there, the color and clarity of the water, how ice forms in winter and melts in spring, and much more. Useful advice will help you look out for your lake and advocate for its protection.

## Typical Fin Structure

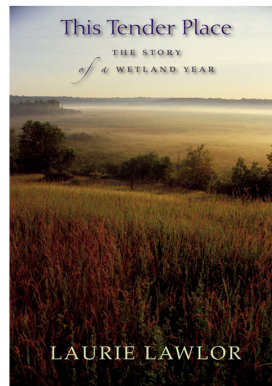


Of related interest



*The Driftless Reader*  
Edited by Curt Meine  
and Keefe Keeley

ISBN 978-0-299-31480-4  
CLOTH \$26.95



*This Tender Place:  
The Story of a Wetland  
Year*

Laurie Lawlor

ISBN 978-0-299-21464-7  
PAPER \$19.95